



Product Catalog 2012



Sustainable Hot Water Solutions

Delivered by **Apricus**

Contact Information

Apricus, Inc.

6 Sycamore Way, Unit 2
Branford, CT 06405

T: 203-488-8215

F: 203-488-8572

Toll Free: 1-877-458-2634

Purchase Orders

Please email purchase orders to accounting-usa@apricus.com. To calculate your buy price, apply multiplier to MSRP and round to two decimal places. Certain products may have longer lead times. Contact Apricus or your representative for current product availability.

Terms of Sale

Prices are effective at the time shipments are made. Apricus reserves the right to make changes to product specifications and prices without notice. Please contact Apricus for your company's sales terms, all customers are subject to a credit check.

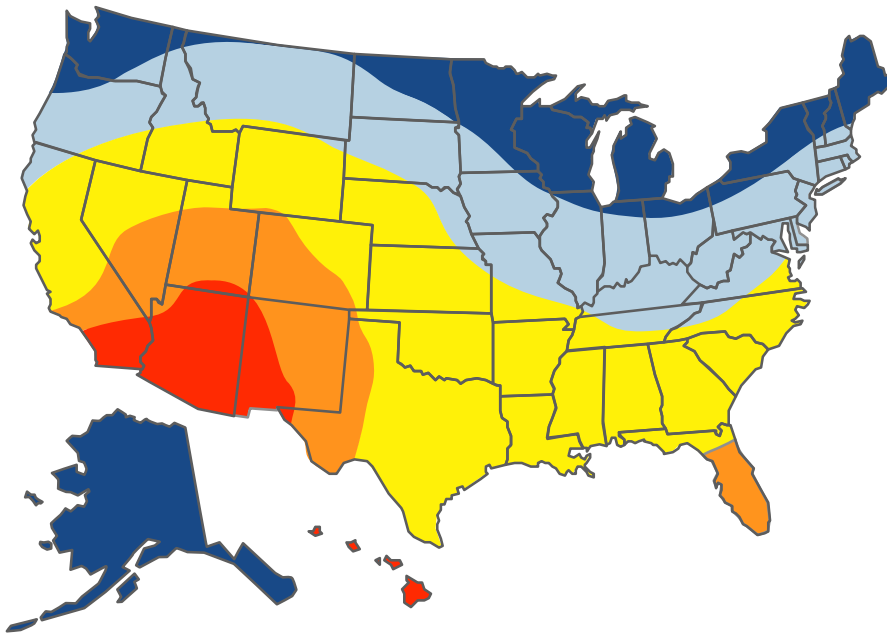
Warehouse Shipments

Product shipments are made from Apricus warehouses on Tuesdays and Thursdays only. Carriers will be selected by Apricus unless otherwise noted on the purchase order. Any expedited deliveries or special shipment requests (lift gate, multiple stopes, etc) will be charged to the recipient.

Sizing Information



Apricus “AP” collectors are designed to be used in a wide variety of solar thermal applications in virtually any climate. Evacuated tube and heat pipe technologies provide efficient and reliable solar thermal performance in a simple to install, low maintenance design.



1. Sizing is based on providing >90% of domestic hot water in the summer time. An electric or gas backup system is required to guarantee hot water year round.
2. Based on a true south installation at an angle of 10° or greater than the latitude of the location.
3. Additional components required include pumps, valves, controls and in certain areas, heat exchangers and propylene glycol antifreeze.

Climate	Size of Household							
	3 People		4 People		5 People		6 People	
	Tank (gal)	Collectors	Tank (gal)	Collectors	Tank (gal)	Collectors	Tank (gal)	Collectors
Red	80	1 x AP-20	80	1 x AP-20	80	1 x AP-30	120	2 x AP-20
Orange	80	1 x AP-20	80	1 x AP-30	120	1 x AP-30	120	2 x AP-20
Yellow	80	1 x AP-20	80	1 x AP-30	120	1 x AP-30	120	2 x AP-30
Light Blue	80	1 x AP-30	80	1 x AP-30	120	2 x AP-20	120	2 x AP-30
Dark Blue	80	1 x AP-30	80	2 x AP-30	120	2 x AP-30	120	2 x AP-30

This document is meant to aid the sizing of residential hot water systems. The chart above is to serve as a guide only. All systems should be designed and installed by qualified persons. Complete sizing and installation information can be found in the Apricus Installation and Operation Manual.

For assistance with sizing **commercial projects** please call Apricus at 1-877-458-2634 or contact your local Apricus representative.

The Apricus AP Solar Collectors are available in 10 tube, 20 tube and 30 tube models. The AP-30C model meets the requirements of the Buy American Act and is suitable for projects funded by the American Recovery and Reinvestment Act (ARRA).

Features

- Twin glass evacuated tube (passive solar tracking)
- Freeze protected heat pipes
- Meets the requirements of NSF 61
- 3/4" copper head connections
- Recycled glass wool manifold insulation
- Efficient performance at high differential temperatures
- Wind resistant up to 130mph
- Hail resistant in accordance with EN 12975



Model*	Description	Performance (kBtu/day)**	Size (sqft)	Dry Weight (lbs)	MSRP
APSE-10	Complete 10 tube evacuated tube collector.	13	14.46	77	\$822
APSE-20	Complete 20 tube evacuated tube collector.	26	28.90	140	\$1,355
APSE-30	Complete 30 tube evacuated tube collector.	41	44.76	212	\$1,929
AP-30C***	Complete 30 tube Buy American collector.	41	44.76	213	\$2,293

* Model name and MSRP is for reference only and is NOT an inventory item available for sale.

** Performance is based on SRCC Category C Clear Rating

*** The AP-30C Collector comes standard with frame and mounting hardware. Additional mounting hardware listed in this catalog is not compatible with the AP-30C.

How to Order an Apricus Evacuated Tube Collector

To order a complete AP Solar Collector select from each of the following sections below. Angled frames are only required for collectors that are not mounted flush to a roof.

1. Manifold - see page 4 for details.
2. Evacuated Tubes & Heat Pipes - see page 4 for details.
3. Mounting Hardware - see page 6 and 7 for details.
4. Angled Frames (when required) - see page 5 for details.



Manifold Kits

Manifold connections are all 3/4" copper allowing for easy and versatile installation. Manifold kits come with a standard frame. Kits do not include mounting hardware, see pages 6 and 7 for mounting hardware details.

Parts Included:

- Manifold
- Standard Frame
- Heat transfer paste
- Tube clips
- Installation Instructions



Part Number	Description	Shipping Weight (lbs)	MSRP
APSE-10-KIT	10 tube manifold kit with standard frame.	22	\$488
APSE-20-KIT	20 tube manifold kit with standard frame.	31.5	\$687
APSE-30-KIT	30 tube manifold kit with standard frame.	45	\$927
APSE-30C-KIT	Buy American compliant 30 tube manifold kit. Comes standard with mounting hardware. <i>Additional mounting components not required.</i>	48	\$1,291

Tubes & Heat Pipes

Apricus Evacuated Tubes are made from high quality borosilicate glass and contain freeze-protected heat pipes.

Parts included:

- Apricus Evacuated Tube
- Heat pipes
- Heat transfer fins
- Washer and heat pipe spring
- Rubber tube caps
- Spring plate



Part Number *	Description	Shipping Weight (lbs)	MSRP
BOX-ET-10	10 replacement evacuated tubes. Additional components not included.	64	\$177
BOX-ET/HP-10/10	10 evacuated tubes with 10 heat pipe assemblies.	75	\$334
BOX-ET/HP-12/10	10 evacuated tubes with 10 heat pipe assemblies. Comes with 2 spare replacement tubes.	82.5	\$355

* Wholesale orders have minimum quantity restrictions. Contact Apricus for details.

Angled frame kits are used when the collector installation angle needs to be elevated. The products listed below connect directly to the standard frame (provided in all manifold packages). Mounting hardware not included.

AP Series Angled Frames

Frames listed below are adjustable between 27° and 57° and are constructed from high quality 439 stainless steel. Frames do not include mounting hardware (see pages 6 and 7).

Parts Included:

- Back legs
- Cross brace
- Diagonal brace
- Connection hardware



Part Number	Description	Shipping Weight (lbs)	MSRP
FR-10-HIGH	AP-10 High Angle Frame, adjustable from 27°-57°	16	\$202
FR-20-HIGH	AP-20 High Angle Frame, adjustable from 27°-57°	17	\$205
FR-30-HIGH	AP-30 High Angle Frame, adjustable from 27°-57°	23	\$279

AP-30C Angled Frames

Frames listed below are for use with the AP-30C collector only. Constructed from 304 stainless steel, these frames come in 30° and 45° angles.

Parts Included:

- Back legs
- Cross brace
- Mounting connection hardware



Part Number	Description	Shipping Weight (lbs)	MSRP
FR-30C-HIGH-30	30° fixed angle frame for AP-30C collector.	10	\$403
FR-30C-HIGH-45	45° fixed angle frame for AP-30C collector.	12	\$403

Apricus offers a variety of mounting hardware options in order to accommodate various types of roofs and installations. All mounting hardware comes prepackaged according to the specific requirements of the collector model. Mounting hardware listed below is not compatible with the AP-30C Collector.

Flashing Kit

Used for installation on composite shingle roofs. This product provides a certified water-tight seal and is quick and easy to install.

Parts Include:

- 8.5" x 12" roof flashing
- Custom 4" aluminum bracket
- 4" lag bolt
- Sealing washer & connection hardware



Part Number	Description	Shipping Weight (lbs)	MSRP
FR-30-FLASH-KIT	Composite shingle roof flashing kit for AP-30. Contains 6 x flashing assemblies.	12	\$124
FR-20-FLASH-KIT	Composite shingle roof flashing kit for AP-20 and AP-10. Contains 4 x flashing assemblies.	8	\$82.65

U-Foot

Versatile U-bracket can be used to attach to third party mounting hardware or existing structures (e.g. ballasts).

Parts Include:

- Stainless steel 2" U-bracket
- Connection hardware



Part Number	Description	Shipping Weight (lbs)	MSRP
FR-30-UFOOT-KIT	U Foot mounting package for use with AP-30. Contains 6 x FR-UFOOT.	1.8	\$23.25
FR-20-UFOOT-KIT	U Foot mounting package for use with AP-20 or AP-10. Contains 4 x FR-UFOOT.	1.2	\$15.50

Roof Track

Stainless steel C-channel unit for use with angled frame kits.

Parts Include:

- 75" roof track
- Connection hardware



Part Number	Description	Shipping Weight (lbs)	MSRP
FR-30-RTRACK-KIT	Roof track for use with FR-30-HIGH. Contains 3 x FR-RTRACK.	15	\$147.25
FR-20-RTRACK-KIT	Roof track for use with FR-20 or FR-10. Contains 2 x FR-RTRACK.	10	\$98.15

Round Foot

Stainless steel bracket for use with angled frame kits when mounting to existing structures (e.g. ballasts).

Parts Include:

- 5" round foot
- Rubber cover
- Connection hardware



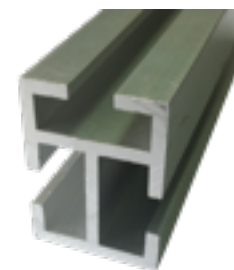
Part Number	Description	Shipping Weight (lbs)	MSRP
FR-30-RFOOT-KIT	Round foot for use with FR-30-HIGH. Contains 6 x FR-UFOOT.	3.6	\$70.53
FR-20-RFOOT-KIT	Round foot for use with FR-20 or FR-10. Contains 4 x FR-UFOOT.	2.4	\$47

Mounting Rail

Aluminum bracket for use with angled frame kits when mounting to existing structures (e.g. ballasts).

Parts Include:

- 7.5' mounting rail
- Mounting hardware



Part Number	Description	Shipping Weight (lbs)	MSRP
FR-RAIL-KIT	Mounting rail kit for Apricus collectors. Contains 2x mounting rails and hardware for attachment of one AP-20 or one AP-30 collector.	14	\$142.60
FR-RAIL-CON	Rail connection brackets. (Connecting rails in series).	0.1	\$6.20

Spare Mounting Parts

Part Number*	Description	Shipping Weight (lbs)	MSRP
FR-FLASH-ASSY	Composite shingle roof flashing kit. Contains 1 assembly.	2	\$24.78
FR-UFOOT-ASSY	Lifts standard frame 2" off of roof. For use with existing frame structure.	0.3	\$9.30
FR-RFOOT-ASSY	Round foot with both assembly and rubber cover.	0.6	\$28.20
FR-TRPAD	Extra thick rubber frame pad. For use with front track or roof track to separate frame from mounting material.	0.06	\$3.09
FR-RTRACK-ASSY	Roof track with connectors for use with angled frame kits.	5	\$58.89
FR-TRACK-EXT	Front track extension for snowy areas. Extends length of front track by 12" at the bottom. Compatible with angled frames.	5	\$19.34

*Mounting hardware spare part prices are at a higher rate than mounting hardware kits. See price list for details.

Heat Transfer Paste

Part Number	Description	Shipping Weight (lbs)	MSRP
HTPASTE-25G	25G heat transfer paste tube.	0.06	\$3.10
HTPASTE-1KG	1KG heat transfer paste tub.	2.2	\$46.50

Valves & Pumps

Part Number	Description	Shipping Weight (lbs)	MSRP
BS-P-SLR-DB	High head circulator for solar side of DB and DBX tanks.	9.5	\$348
BS-P-DHW-HEX	Small circulator for water side of DBX tanks.	6	\$214
BS-AV	Automatic air vent, 1/2" NPT male, high temp rated.	0.3	\$63.95
BS-AVSO	Shut off valve for air vent, 1/2" NPT x FNPT, high temp rated.	0.2	\$52.07
BS-BV-ADJ-2-7	Flow meter and balancing valve, 3/4" NPT, 2-7 gpm, insulated.	1.6	\$186
BS-FM-ADJ-0.5-5	Flow meter with balancing valve, 0.5-5 gpm, 1" union threads.	1	\$124
BS-FM-ADJ-1-10	Flow meter with balancing valve, 1-10 gpm, 1" union threads.	1	\$139.5

Apricus pump stations come pre-plumbed, pre-wired and are designed to streamline the installation of solar thermal systems. All pump stations include:

- Standard US copper connections
- Integrated flow setter
- Large temperature and pressure gauge
- Flanged circulator
- Differential controller
- Pressure relief valve

Closed Loop Pump Station - 3/4"

Used for residential closed loop (glycol) systems. Can be used with up to 3 AP-30 collectors. Not for use in potable water systems.

Additional Features:

- 3/4" copper connection
- Automatic air vent
- Expansion tank and connection kit
- Insulated EPP cover



Closed Loop Pump Station 3/4"



Closed Loop Pump Station 1"

Closed Loop Pump Station - 1"

Used for larger residential or light commercial closed loop (glycol) systems. Can be used with up to 10 AP-30 collectors. Not for use in potable water systems.

Additional Features:

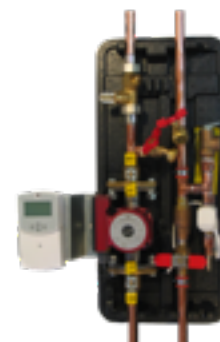
- 1" fittings, no adapters needed
- Larger flanged circulator
- Controller with SD card and software

Direct Flow Pump Station - 3/4"

Used for residential open loop systems. Pump station circulates potable water through the collector. Can be used with up to 3 AP-30 collectors.

Additional Features:

- 3/4" copper connection
- Power outage drip valve
- Insulated EPP cover



Direct Flow Pump Station 3/4"

Part Number	Description	Pump	Shipping Weight (lbs)	MSRP
APS-KIT-DOM-CL	3/4" Closed Loop Pump Station.	Grundfos UPS 15-58 FC	40 (2 boxes)	\$1,678
APS-COM-CL	1" Closed Loop Pump Station.	Grundfos UPS 26-99 FC	32	\$2,474
APS-KIT-DOM-DF	3/4" Direct Flow Pump Station.	Grundfos UPS 15-29-SF	30	\$2,125

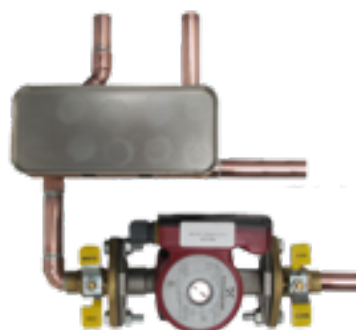
Pump station add-on kits provide extra features to the Apricus pump stations. All products are designed for easy integration into the solar hot water system.

Brazed Plate Heat Exchanger

External heat exchanger and pump package designed to be used with 3/4" residential closed loop pump station. For tanks without internal heat exchangers.

Additional Features:

- Double wall heat exchanger with positive leak detection
- 3/4" copper connections
- Heat exchange capacity for up to 3 AP-30 collectors
- Potable water circulator



Brazed Plate Heat Exchanger

Dissipation Valve

3-way diverting valve designed to control heat dissipation.

Additional Features:

- Easy connection to Apricus controllers
- Pre-plumbed supply and return connections
- 3/4" copper connections



Dissipation Valve

Heat Dissipator (HD-25)

Liquid-to-air radiator designed to dissipate full output of 1 AP-30 collector.

Additional Features:

- 1/2" copper connections



HD-25

Part Number	Description	Shipping Weight (lbs)	MSRP
APS-ADD-12DWBPHE	12 plate, double-wall brazed plate heat exchanger module, circulation pump, pre-piped, includes connection cable.	18	\$945
APS-ADD-HDIS	3-way valve with actuator for heat dissipation includes connection cable. <i>(Compatible with HD-25 and AC-1 controller).</i>	8	\$444
HD-25	Liquid to air heat dissipation unit for over heat protection of 1 AP-30 collector.	16.5	\$352

Apricus controls and sensors provide flexible, high quality monitoring of residential and commercial solar thermal systems.

Digital Flow Meter

Grundfos VFS flow meter connects to controller to provide precise energy metering.



Digital Flow Meter

Apricus AC1 Controller

Robust and intuitive differential solar controller with a simple, easy-to-use interface and programmable SD card.



AC1 Controller

Apricus MFC-1 Controller

Multifunction controller used for advanced solar applications. Flexible programming allows for additional levels of customization.



MFC-1 Controller

Additional Sensors

PT1000 type sensors for use with Apricus products. Collector and tank sensors available.



Collector Sensor



Tank Sensor

Part Number	Description	Shipping Weight (lbs)	MSRP
APS-ADD-FLOW*	Digital flow sensor module (0.5-10 gallons H ₂ O per minute). Larger sizes available, call for pricing.	2	\$531
AC1-CONT	Advanced differential solar controller with SD card, software, collector sensor and 2x tank sensors. Power cable not included.	2	\$510
MFC-1-A	MFC-1 controller with 5 temperature sensors.	2	\$465
AC1-SEN-COLL	Collector sensor PT1000. UV resistant.	0.2	\$22.94
AC1-SEN-TANK	Tank sensor PT1000.	0.2	\$19.22

* Larger sizes available, contact Apricus for details.

Drainback Tanks

Apricus DB and DBX Drainback Tanks are used as the reservoir for heat transfer fluid when the system is not in operation.

Features:

- 304 stainless steel construction
- R-6.4 non-CFC insulation
- ABS outer shell
- Factory installed pressure relief valve (30 psi)
- Noise reducing dip-tube

Heat Exchanger Information:

- Type C12200 finned coil heat exchanger
- 1/2" NPT connections
- Meets requirements of ASME SB75/SB359



Part Number	Heat Exchanger Type	Heat Exchanger Surface Area (sqft)	Dimensions (in)		Capacity (gal)		Shipping Weight (lbs)	MSRP
			Height	Diameter	Volume	Usable Volume		
DB-10	N/A	N/A	16.34	18.16	9.55	6.50	27	\$803
DB-15	N/A	N/A	22.34	18.16	14.72	11.66	37	\$844
DB-20	N/A	N/A	28.34	18.16	19.94	16.88	40	\$1,441
DBX-10	Single Wall	10	16.34	18.16	9.31	6.25	31	\$1,337
DBX-15	Single Wall	15	22.34	18.16	14.34	11.29	46	\$1,544
DBX-20	Single Wall	20	28.34	18.16	19.56	16.51	52	\$2,271

Part Number	Description	Shipping Weight (lbs)	MSRP
DB-KIT	Controller and solar pump kit for DB tanks.	11	\$820
DBX-KIT	Controller, solar and domestic pump kit for DBX tanks.	16	\$1,038

SOL Indirect Solar Tanks

High quality tank for use in closed loop or drainback systems where a tank with an integral heat exchanger is required.

Features:

- Single-wall heat exchangers
- Temperature sensor ports
- Diffuser dip tube
- 2" non-CFC insulation (R-16)
- One mid-tank 4500W electric element
- CSA certified and ASME rated T&P valve
- Rated for continuous operation up to 160°F
- Specified in Apricus OG300 systems



Part Number	Capacity (gal)	Element Wattage (240V)	Recovery 90° Rise (gal/hr)	Dimensions (in)		Shipping Weight (lbs)	MSRP
				Height	Diameter		
PTK-SOLX-80	76	4500	21	63-1/4	24	257	\$2,146
PTK-SOLX-120	108	4500	21	63-1/4	28	365	\$3,100

*SOLX tanks are for U.S. installations only. For installations in Canada, please contact Apricus for details.

SOL Direct Solar Tanks

High quality tank for use in closed loop systems with an external heat exchanger or in systems where potable water is circulated directly through the collector.

Features:

- Side and top solar connections
- Temperature sensor ports
- Diffuser dip tube
- 2" non-CFC insulation (R-16)
- Mid-tank 4500W electric element
- CSA certified and ASME rated T&P valve
- Specified in Apricus OG300 systems



Part Number	Capacity (gal)	Element Wattage (240V)	Recovery 90° Rise (gal/hr)	Dimensions (in)		Shipping Weight (lbs)	MSRP
				Height	Diameter		
PTK-SOL-80	80	4500	21	63-1/4	24	204	\$1,216
PTK-SOL-120	119	4500	21	63-1/4	28	311	\$1,527

*SOL tanks are for U.S. installations only. For installations in Canada, please contact Apricus for details.

Line Sets

Pre-insulated line sets help to reduce installation time of the collector supply and return lines as well as insulating these pipes. The corrugated stainless steel pipe works seamlessly with the self flaring fittings offering multiple connection options.



Features:

- Self-flaring fittings
- No gaskets or washers
- T316L tubing
- Can be cut using standard tubing cutter
- High temperature insulation

Part Number *	Description	Shipping Weight (lbs)	MSRP
LS-100-S-075	100 ft. insulated single 3/4" piping	45	\$1,146
LS-100-S-100	100 ft. insulated single 1" piping	54	\$1,418
LS-100-S-075-SW	100 ft. insulated single 3/4" piping w/ sensor wire	45	\$1,203
LS-100-S-100-SW	100 ft. insulated single 1" piping w/ sensor wire	54	\$1,489
LS-050-D-075-SW	50 ft insulated dual 3/4" piping w/ sensor wire	47	\$1,186
LS-050-D-100-SW	50 ft insulated dual 1" piping w/ sensor wire	56.5	\$1,468
LS-100-D-075-SW	100 ft insulated dual 3/4" piping w/ sensor wire	94	\$2,348
LS-100-D-100-SW	100 ft insulated dual 1" piping w/ sensor wire	113	\$2,907
LS-F-075-MNPT	3/4" lineset to 3/4" Male NPT Fitting	0.5	\$20.77
LS-F-075-FNPT	3/4" lineset to 3/4" Female NPT fitting	0.5	\$20.77
LS-F-075-075	3/4" lineset to 3/4" lineset fitting	0.7	\$38.60
LS-F-075-COM-075	3/4" lineset to 3/4" copper pipe compression fitting	0.7	\$101.84
LS-F-100-MNPT	1" lineset to 1" Male NPT Fitting	0.7	\$32.12
LS-F-100-100	1" lineset to 1" lineset fitting	0.9	\$59.74
LS-F-100-COM-075	1" lineset to 1" copper pipe compression fitting	0.9	\$106.27

*Other fittings and pipe sizes available. Please contact Apricus if the product you are looking for is not shown.

Packaged systems ensure that residential solar thermal installations meet customer expectations for quality, reliability and safety. These packaged systems feature high-efficiency AP evacuated tube collectors, pump stations and tanks. Apricus packaged systems can be used to create a number of SRCC OG300 or IAPMO USEC certified systems when combined with the appropriate backup heater.

Mounting hardware, angled frames, line sets and other items not listed below must be ordered separately.

Packaged System Benefits

- Certified Solar Water Heating Systems*
- All packaged systems include high performance Apricus collectors
- Provides 50-80% of annual hot water requirements from the sun
- Reduced installation, design and quotation time
- Multiple size options
- Eligible for 30% Federal Tax Credit
- Solar Energy Factor (SEF) ratings up to 9.



*Certain packaged systems listed in the following pages hold either SRCC OG0-300 or IAPMO USEC certifications. Contact Apricus for more information.

Tank & Collector Packages

Part Number *	Included Components		MSRP
	Tank	Collector(s)	
000-1E30-080X	SOLX-80	1x AP-30	\$3,992
000-2E20-080X	SOLX-80	2x AP-20	\$4,758
000-2E20-120X	SOLX-120	2x AP-20	\$5,694
000-2E30-120X	SOLX-120	2x AP-30	\$6,818
000-1E30-080D	SOL-80	1x AP-30	\$3,081
000-2E20-080D	SOL-80	2x AP-20	\$3,847
000-2E20-120D	SOL-120	2x AP-20	\$4,152
000-2E30-120D	SOL-120	2x AP-30	\$5,276

*Packages listed above include solar collector and tank only. See pages 16 and 17 for packages that include pump stations and heat exchangers. *SOL and *SOLX tanks are for U.S. installations only. For installations in Canada, please contact Apricus for details.

Closed Loop - Single Wall Indirect Heat Exchanger

Part Number	Included Components			MSRP
	Tank	Collector(s)	Pump Station	
100-1E30-080X	SOLX-80	1x AP-30	Closed loop 3/4" (APS-KIT-DOM-CL)	\$5,636
100-2E20-080X	SOLX-80	2x AP-20	Closed loop 3/4" (APS-KIT-DOM-CL)	\$6,402
100-2E20-120X	SOLX-120	2x AP-20	Closed loop 3/4" (APS-KIT-DOM-CL)	\$7,337
100-2E30-120X	SOLX-120	2x AP-30	Closed loop 3/4" (APS-KIT-DOM-CL)	\$8,461

Closed Loop - Double Wall External Heat Exchanger

Part Number	Included Components				MSRP
	Tank	Collector(s)	Pump Station	Heat Exchanger	
200-1E30-080D	SOL-80	1x AP-30	Closed loop 3/4" (APS-KIT-DOM-CL)	Double Wall Heat Exchanger Kit (APS-ADD-12DWPHE)	\$5,651
200-2E20-080D	SOL-80	2x AP-20	Closed loop 3/4" (APS-KIT-DOM-CL)	Double Wall Heat Exchanger Kit (APS-ADD-12DWPHE)	\$6,416
200-2E20-120D	SOL-120	2x AP-20	Closed loop 3/4" (APS-KIT-DOM-CL)	Double Wall Heat Exchanger Kit (APS-ADD-12DWPHE)	\$6,721
200-2E30-120D	SOL-120	2x AP-30	Closed loop 3/4" (APS-KIT-DOM-CL)	Double Wall Heat Exchanger Kit (APS-ADD-12DWPHE)	\$7,846

*SOL and SOLX tanks are for U.S. installations only. For installations in Canada, please contact Apricus for details.

Direct Flow

Part Number	Included Components			MSRP
	Tank	Collector(s)	Pump Station	
300-1E30-080D	SOL-80	1x AP-30	3/4" Direct Flow (APS-DOM-DF)	\$5,163
300-2E20-080D	SOL-80	2x AP-20	3/4" Direct Flow (APS-DOM-DF)	\$5,929
300-2E20-120D	SOL-120	2x AP-20	3/4" Direct Flow (APS-DOM-DF)	\$6,234
300-2E30-120D	SOL-120	2x AP-30	3/4" Direct Flow (APS-DOM-DF)	\$7,358

Drainback

Part Number	Included Components			MSRP
	Tank	Collector(s)	Drainback Tank & Components	
400-1E30-080X	SOLX-80	1x AP-30	DB-10 with pump and controls	\$5,582
400-2E20-080X	SOLX-80	2x AP-20	DB-10 with pump and controls	\$6,348
400-2E20-120X	SOLX-120	2x AP-20	DB-10 with pump and controls	\$7,283
400-2E30-120X	SOLX-120	2x AP-30	DB-10 with pump and controls	\$8,407
500-1E30-080D	SOL-80	1x AP-30	DBX-10 with pumps and controls	\$5,408
500-2E20-080D	SOL-80	2x AP-20	DBX-10 with pumps and controls	\$6,174
500-2E20-120D	SOL-120	2x AP-20	DBX-10 with pumps and controls	\$6,479
500-2E30-120D	SOL-120	2x AP-30	DBX-10 with pumps and controls	\$7,603

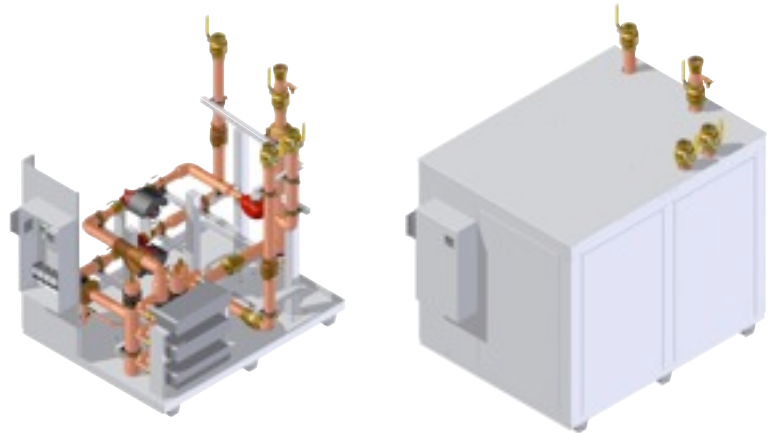
*SOL and SOLX tanks are for U.S. installations only. For installations in Canada, please contact Apricus for details.

These pump stations are delivered to the job site assembled, wired and pressure tested making the design and installation process of commercial solar thermal systems quick and efficient.

Closed Loop Commercial Pump Station

Features:

- Factory assembled pumping station
- VFD controlled pumps for improved efficiency
- Pre-wired controller
- Single or double wall heat exchanger
- Air removal device
- Pressure relief valve for solar and domestic side
- Energy metering through integrated controllers
- SD card for data logging
- Fluid balancing valve



Part Number	Heat Exchanger	# of AP-30 Collectors	Pipe Size	Output Rating (Btu/h)	MSRP
PS-CL-20-SW	Single Wall	20	1.5"	140,000	Call for pricing
PS-CL-20-DW	Double Wall	20	1.5"	140,000	
PS-CL-40-SW	Single Wall	40	1.5"	280,000	
PS-CL-40-DW	Double Wall	40	1.5"	280,000	
PS-CL-60-SW	Single Wall	60	2"	320,000	
PS-CL-60-DW	Double Wall	60	2"	320,000	
PS-CL-80-SW	Single Wall	80	2.5"	480,000	
PS-CL-80-DW	Double Wall	80	2.5"	480,000	
PS-CL-100-SW	Single Wall	100	2.5"	640,000	
PS-CL-100-DW	Double Wall	100	2.5"	640,000	

Designed for commercial solar thermal applications these glass-lined storage tanks meet all performance and safety requirements of a commercial solar thermal system. Standard sizes are listed below and custom tanks up to 12,500 gallons can be ordered. Tanks are also available in stainless steel for high temperature applications. Contact Apricus directly for custom tank orders.

Horizontal Pressurized Storage Tanks

Features :

- Standard ASME rating for 160 psi
- Additional ports for solar thermal applications
- Factory installed PT1000 sensors
- Magnesium anodes
- 3" high density fiberglass insulation (R12.5, up to R16 available)
- Steel jacket with powder coat paint



Part Number	Nominal Volume (gallons)	Height (in)	Depth (in)	Length (in)	Dry Weight (lbs)	MSRP
PTK-200-H	200	41	36	77	1020	Call for pricing
PTK-250-H	250	41	36	90	1082	
PTK-350-H	350	47	42	93	1232	
PTK-400-H	400	47	42	99	1402	
PTK-500-H	500	59	54	79	2270	
PTK-750-H	750	59	54	111	2970	
PTK-1000-H	1000	59	54	143	3751	

Vertical Pressurized Storage Tanks

Features:

- Standard ASME rating for 160 psi
- Additional ports for solar thermal applications
- Factory installed PT1000 sensors
- Magnesium anodes
- 3" high density fiberglass insulation (R12.5, up to R16 available)
- Steel jacket with powder coat paint



Part Number	Nominal Volume (gallons)	Width (in)	Height (in)	Dry Weight (lbs)	MSRP
PTK-140-V	140	30	86	613	Call for pricing
PTK-200-V	200	36	82	749	
PTK-250-V	250	36	95	811	
PTK-300-V-T	300	36	110	898	
PTK-300-V-S	300	42	82	857	
PTK-350-V	350	42	97	942	
PTK-400-V	400	42	104	1436	
PTK-450-V	450	42	118	1565	
PTK-500-V-T	500	42	133	1682	
PTK-500-V-S	500	48	99	1714	
PTK-600-V	600	48	114	1820	
PTK-700-V	700	48	130	1911	
PTK-800-V	800	54	120	2974	
PTK-900-V	900	54	128	3208	
PTK-1000-V-T	1000	54	148	3697	
PTK-1000-V-S	1000	66*	99	3947	
PTK-1500-V	1500	60*	164	4456	
PTK-2000-V-T	2000	66*	176	6035	
PTK-2000-V-S	2000	78*	131	5952	

Unpressurized (atmospheric) tanks provide excellent options for residential and commercial solar thermal applications. Tanks are shipped flat, which makes them a superior choice in retrofit applications or whenever the tank must be maneuvered through tight spaces (doorways for example). Tanks are easily assembled and heat exchange coils are installed on site. Custom coil configurations allow the tanks to be used in a wide range of applications.

Apricus provides sizing and coil specifications for all atmospheric storage projects. For information on parts not listed in the following pages call Apricus.

Tanks

High quality tanks designed for use in a variety of commercial and industrial applications which allow for flexible installation. These tanks are also able to run in drainback systems without the need for an additional drainback tank and are available in a number of heat exchange configurations.

Features:

- Seamless EPDM lining
- Available in 4', 5', 6' & 7' heights
- 100 - 5000 gallon nominal capacity
- 3" EPS Insulation
- Removable lid
- Powder coated aluminum jacketing
- Can be assembled on site
- Coil heat exchangers sized separately and installed inside tank
- "Dead water" helps improve tank stratification
- Preinstalled sensor ports
- 5 year limited warranty
- See page 22 for details



Coils

Coil heat exchangers are designed to be used with Apricus ATK atmospheric tanks. These coils are available in a variety of sizes and lengths so that the tanks can be customized for each application.

Features:

- Copper construction
- Multiple configurations
- Efficient heat transfer
- Available in 3/4" or 1"
- Single and double stacked coils
- Coils can be combined for larger systems
- See page 23 for details



Atmospheric Storage Tanks



Part Number	Nominal Volume (gallons)	Width (in)	Height (in)	Dry Weight (lbs)	Max No. Coils	MSRP
ATK-4-100	100	33	48	119	1	Call for pricing
ATK-4-150	150	36	48	129	1	
ATK-4-200	200	40	48	137	1	
ATK-4-225	225	45	48	141	1	
ATK-4-250	250	48	48	155	2	
ATK-4-300	300	52	48	166	3	
ATK-5-350	350	48	60	179	1	
ATK-4-400	400	58	48	185	3	
ATK-5-400	400	52	60	222	2	
ATK-4-500	500	64	48	206	4	
ATK-5-500	500	58	60	226	3	
ATK-4-600	600	70	48	227	5	
ATK-5-600	600	64	60	264	5	
ATK-4-700	700	76	48	241	6	
ATK-5-700	700	67	60	270	5	
ATK-4-800	800	80	48	267	7	
ATK-5-800	800	70	60	274	5	
ATK-6-800	800	64	72	281	4	
ATK-4-950	950	86	48	303	8	
ATK-5-950	950	76	60	309	6	
ATK-5-1000	1000	80	60	338	7	
ATK-6-1000	1000	70	72	314	5	
ATK-6-1100	1100	76	72	354	6	
ATK-4-1200	1200	96	48	359	9	
ATK-5-1200	1200	86	60	371	8	
ATK-4-1300	1300	100	48	386	10	
ATK-6-1300	1300	80	72	382	7	
ATK-5-1500	1500	96	60	426	9	
ATK-6-1500	1500	86	72	413	8	
ATK-7-1700	1700	86	84	466	8	
ATK-6-1900	1900	96	72	523	9	
ATK-6-2000	2000	100	72	554	10	
ATK-5-2100	2100	110	60	532	10	
ATK-7-2200	2200	96	84	574	9	
ATK-5-2500	2500	120	60	584	12	
ATK-7-2800	2800	108	84	725	10	
ATK-6-3000	3000	120	72	688	12	
ATK-6-3400	3400	128	72	754	call for details	
ATK-7-3500	3500	120	84	864	12	
ATK-7-4000	4000	128	84	979	call for details	
ATK-7-4500	4500	135	84	1078	call for details	
ATK-7-5000	5000	142	84	1144	call for details	

Single Coils

Part Number	Pipe Size	Coil Length (ft)	Height (in)	Diameter (in)	Max Flow (gpm)	Max Pressure Drop (ft of head)
ATK-CHX-075-60	3/4"	60	40	20	4	3
ATK-CHX-075-90	3/4"	90	40	20	4	5
ATK-CHX-075-120	3/4"	120	40	20	4	7
ATK-CHX-075-180	3/4"	180	40	20	4	10
ATK-CHX-100-120	1"	120	40	22	8	7
ATK-CHX-100-100	1"	100	40	22	8	6

Double Coils

Part Number	Pipe Size(s)	Height (in)	Diameter (in)	Upper Coil Length (ft)	Upper Coil Max Flow (gpm)	Lower Coil Length (ft)	Lower Coil Max Flow (gpm)
ATK-CHX-075-60-120	3/4"	40	20	60	4	120	4
ATK-CHX-075-90-90	3/4"	40	20	90	4	90	4
ATK-CHX-075-60-60	3/4"	40	20	60	4	60	4
ATK-CHX-075-90-120	3/4"	40	20	90	4	120	4

Apricus demonstration products are ideal for trade shows and serve as an effective sales tool to show potential customers how Apricus products work.

Demonstration Tube & Heat Pipe

Durable black box with short evacuated tube and heat pipe. Perfect for sales calls.



Demonstration Collector

Fully operational mini-collector with removable manifold cover. Used for table top displays, training and presentations.



Showcase Collector

A 10 tube evacuated tube demonstration collector. (Not pictured)

Part Number	Description	Shipping Weight (lbs)	MSRP
APSE-DEMO	4-tube demonstration collector. Includes 4-tube manifold, frame, 4 evacuated tubes and 1 cutaway tube for demonstration purposes.	28	\$341
TUBE&HP-BOX-DEMO	Single evacuated tube and heat pipe complete with portable carry case.	5.5	\$46.50
APSE-10-SHOWCASE	APSE-10-KIT for display purposes.	40	\$633

Product Catalog & Price List
Effective March 1, 2012

Sustainable Hot Water Solutions
Delivered by Apricus

Apricus reserves the right to make changes to products, specifications and prices without notice.



Apricus Inc.

6 Sycamore Way, Unit 2 Branford, CT 06405

T: 1-877-458-2634 F: (203) 488-8572

E: office-usa@apricus.com

www.apricus.com

